

LIUGONG
NORTH AMERICA



909Ecr

EXCAVATOR

ENGINE	OPERATING WEIGHT	NET POWER	BUCKET CAPACITY	MAX. DIGGING DEPTH
Yanmar 4TNV98C	19,180 lb (8,700 kg)	59 hp (44 kW)	0.37 yd ³ (0.28 m ³)	14 ft 11 in (4,540 mm)



A VERSATILE MACHINE PACKED WITH FEATURES

The 909ECR was designed to be a multifunction tool carrier, loaded with features that are merely options on other excavators. It's flexible and versatile, making you even more productive.

VISIBLE IMPROVEMENTS

With a limited tail swing, this adaptive machine is designed to be a multi-function tool carrier. With upper frame design and rearview camera, the improved cab offers the operator 360-degree visibility.

DUAL AUXILIARY CONTROLS

The dual auxiliary controls feature high flow and low flow two-way proportional control are adjustable at the monitor. The improved design has a dedicated case drain line from the arm's end to the hydraulic tank. Choose multiple attachments for increased productivity.

DOZER BLADE CONTROL

Proportional two way action dozer function with standard blade float, allowing for easy backfilling when in reverse travel mode.

BOOM SWING

The boom swing allows the operator to dig parallel to the dozer blade. This improves the ability to dig with minimum repositioning and reduces chance of damaging the machine.





EXCEPTIONAL COMFORT

ROPS certified pressurized climate-controlled cab with high-visibility displays, ergonomically designed controls, low-effort joysticks, and air suspension seat. One sliding window, a large removable bottom windshield, and a foldable top windshield offer the operator exceptional flexibility to configure the cab to meet their needs.

PROVEN, RELIABLE POWER

The fuel-efficient, Tier 4 Final Yanmar 4TNV98C engine builds upon the Yanmar TNV line's legendary reliability. Go longer between oil changes with a 500 hour engine oil service interval.

AFTER SALES SERVICE

LiuGong customers can feel confident that our dealers and regional offices will be there to support you with training, service, and maintenance needed throughout your machine's life.

LIMITED TAIL SWING

When you're working in a confined space or near obstacles, you'll appreciate the limited tail swing design, ensuring easy operation and reducing the odds of accidental damage.

TRAVEL CAMERA

As an extra eye outside the machine, the standard rearview camera sends images to the in-cab LCD monitor, providing 360-degree visibility to the operator, creating a safer working environment as you concentrate on the work at hand.

POWER MEETS PERFORMANCE

The secret to the 909ECR's proven and reliable power is the Tier 4 Final Yanmar 4TNV98C engine, with an advanced hydraulic system perfectly matched to it. This load sensing, flow sharing capability means greater precision and control. And what more could an operator ask for than that?



ADVANCED HYDRAULICS MAJOR R&D

The 909ECR is engineered to provide high performance under demanding conditions while staying true to LiuGong's DNA of simplicity and value. And there's no better example of value than in our advanced hydraulics, a feature that comes standard.

Two auxiliary hydraulics, a high flow, and a low flow out to the end of the arm, plus a dedicated case drain line, allow an operator to hook up to just about any tool they need to use.

LiuGong has also partnered with Yanmar to produce an engine that delivers power to match the application's demands. The engine's superior durability characteristics ensure greater reliability, and 500-hour engine oil service intervals mean you can run longer, with lower maintenance costs.



EASY MAINTENANCE

Ground-level maintenance is a key feature on the 909ECR, with wide-open panels providing convenient access to all major components and service points. Engine oil, starter motor, alternator, air filter, fuel tank, hydraulic tank, and main control valve are all within easy reach.



BLADE TO BUCKET

The 909ECR has a blade float function that is enabled by a detent on the control lever, allowing for blade to bucket convenience. Materials can be easily collected and swept away. This blade float feature really comes in handy when lifting and stabilizing heavy objects.



ON-BOARD MONITORING

Our new 7 inch LCD on-board monitor, with audible sound, alerts the operator of low fluid levels, high-level machine warnings, and required service. When fuel levels are low, a text warning will appear. An audible buzz alerts the operator to the action needed.

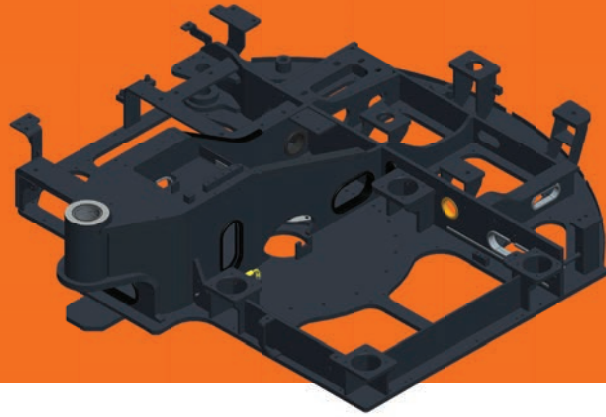
RELIABLE & DURABLE BY DESIGN

The 909EGR, like all LiuGong machines, is focused on what operators care about: durability and dependability. Well-constructed, thoughtfully engineered, and backed by a comprehensive warranty, LiuGong machines are proven tough, getting the job done shift in and shift out.



REINFORCED UPPER STRUCTURE

LiuGong's limited tail swing upper structure has been designed for long life. It is reinforced in high-stress areas, providing even weight distribution and increased stability.



X-FRAME CONSTRUCTION

The high strength undercarriage structure of the 909ECR incorporates a welded X-frame design for long life durability, protecting the travel motors and other critical components from undue stress in the most challenging construction and demolition applications. The best-in-class undercarriage width provides greater side lifting capacity, improving balance, productivity, and operator comfort.



STRONG BOOM & ARM

Boom and arm structures are designed for long-term durability and resistance to bending and torsion stress. High-strength steel on the top and bottom supports these kinds of twisting movements as you cast materials, resulting in long life. Oil impregnated bushings enhance durability for the arm and boom joints.



A MULTIPURPOSE TOOL CARRIER

Switching attachments and work tools like multiple buckets, hydraulic breakers, rock wheels, and shears can be time-consuming and hazardous. LiuGong has made tool changes fast, safe, and easy with our optional quick coupler or optional power latch tilt coupler. Blade to bucket capability adds even more versatility.

A comprehensive warranty is just the start.

Uptime, support, and total cost of ownership help maximize your bottom line. That's why we offer the comprehensive XtraCare Warranty. Having confidence in our back up and support network is a vital part of the purchasing decision.



WHAT LEVEL OF SUPPORT DO YOU NEED?

From genuine LiuGong parts to maintenance contracts and full repair, LiuGong has the flexibility to offer the level of support and response to suit your business and applications. Whatever level you choose, you can be confident that our service promise backs it up.



GENUINE LIUGONG PARTS

Using genuine LiuGong parts is key to keeping your costs low and your machine in top working order. Our extensive support network is always there when you need it, keeping vital parts on hand when you need them. This maximizes both uptime and profitability.

XtraCare

3 year/4000 hour full machine warranty included in every LiuGong North America machine sale.



3 Year/6000 hour full machine warranty included in every LiuGong Forklift machine sale.

XtraCare+

3 year/4000 hour full machine warranty, plus 5 year/7000 hours Power Train & Hydraulics. Coverage for LiuGong machinery 9 tons and up (excluding compact equipment and mini excavators).



XtraCare and XtraCare+ assures you will receive LiuGong genuine replacement parts and service coverage by any authorized LiuGong dealer. LiuGong North America fully supports it.

XtraCare and XtraCare+ warranty coverage is transferable with your equipment, adding value to resell or equipment trade

SPECIFICATIONS

ENGINE

Yanmar Tier 4 Final, 3.3 liter, inline 4-cylinder water-cooled, direct injection, DOC + DPF, high pressure common rail diesel engine.

Emissions rating	EPA Tier 4 Final
Make	Yanmar
Model	4TNV98C
Aspiration	Natural
Cooling fan drive	Direct
Displacement	202 in ³ (3.3 L)
Gross power	62 hp (46.2 kW) @ 2,200 rpm
Net power	59 hp (44 kW) @ 2,200 rpm
Peak torque	178 lb-ft (241 N·m) 1,430 rpm
Cylinders	4
Bore × Stroke	3.86 x 4.33 in (98 × 110 mm)

HYDRAULIC SYSTEM

Main Pump

Type	Variable displacement piston pump
Maximum flow	50 gal/min (189 L/min)

Relief Valve Setting

Implement	4,061 psi (28 MPa)
Travel circuit	4,554 psi (31.4 MPa)
Slew circuit	4,061 psi (28 MPa)
Pilot circuit	566 psi (3.9 MPa)

Hydraulic Cylinders

Boom Cylinder Bore × Stroke	4.33 in x 34.61 in (110 mm x 879 mm)
Arm Cylinder Bore × Stroke	3.94 in x 34.13 in (100 mm x 867 mm)
Bucket Cylinder Bore × Stroke	3.54 in x 27.95 in (90 mm x 710 mm)

SERVICE CAPACITIES

Fuel tank	30.6 gal (116 L)
Engine oil	3.1 gal (11.6 L)
Final drive (each)	0.29 gal (1.08 L)
Swing drive	0.42 gal (1.6 L)

SERVICE CAPACITIES (CONTINUED)

Cooling system	3.8 gal (14.5 L)
Hydraulic reservoir	19.0 gal (72 L)
Hydraulic system total	29.1 gal (110 L)

UNDERCARRIAGE

Track shoe each side	39
Link pitch	6.1 in (154 mm)
Steel track street pads	18 in (450 mm)
Bottom rollers each side	6
Top rollers each side	1

SWING SYSTEM

Planetary gear reduction driven by high torque axial piston motor, with oil disk brake. Swing parking brake resets within five seconds after swing pilot controls return to neutral.

Swing speed	10.5 rpm
Swing torque	15,489 lb-ft (21,000 N·m)

DRIVE & BRAKES

2-speed axial piston motors with oil disk brakes. Steering controlled by two detachable hand levers with pedals.

Travel speed	High: 3 mph (4.8 km/h)
	Low: 1.5 mph (2.4 km/h)
Gradeability	35° / 70%
Max. drawbar pull	16,861 lbf (75 kN)

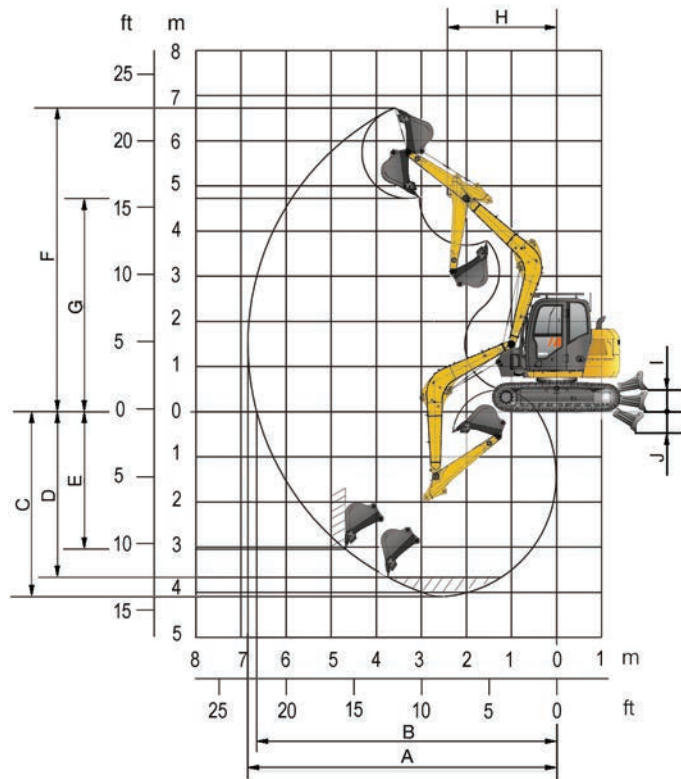
ELECTRIC SYSTEM

System voltage	12V
Battery	12V (one)
Alternator	12V - 80A
Starter motor	12V - 4 hp (12V - 3 kW)

SOUND PERFORMANCE

Interior sound level (ISO 6396)	73 dB(A)
Exterior sound level (ISO 6395)	98 dB(A)

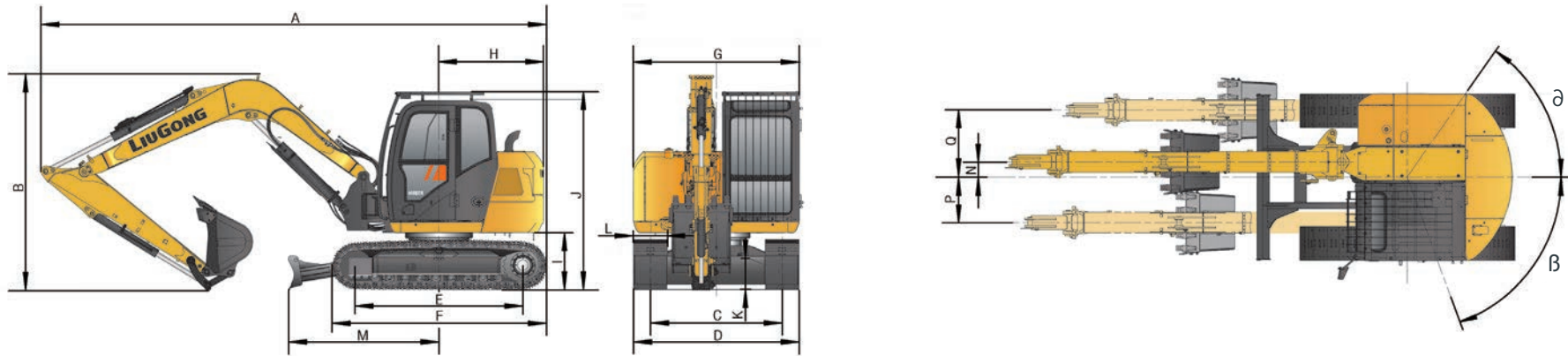
SPECIFICATIONS



WORKING RANGES

Description	Standard Arm	Optional Arm
Boom	11 ft 1 in (3.37 m)	
Arm options	6 ft 11 in (2.1 m)	5 ft 5 in (1.65 m)
A Max. digging reach	23 ft 10 in (7,264 mm)	22 ft 6 in (6,847 mm)
B Max. digging reach at ground level	23 ft 3 in (7,082 mm)	21 ft 10 in (6,651 mm)
C Max. digging depth	14 ft 11 in (4,540 mm)	13 ft 5 in (4,093 mm)
D Max. digging depth 2.4m (8 ft) level bottom	13 ft 8 in (4,163 mm)	12 ft 0 in (3,670 mm)
E Max. vertical wall digging depth Max.	13 ft 0 in (3,963 mm)	10 ft 0 in (3,043 mm)
F Max. digging height	21 ft 5 in (6,625 mm)	22 ft 1 in (6,724 mm)
G Max. dumping height	15 ft 0 in (4,577 mm)	15 ft 6 in (4,725 mm)
H Min. swing radius	7 ft 11 in (2,421 mm)	7 ft 11 in (2,421 mm)
I Dozer up	1 ft 7 in (470 mm)	1 ft 7 in (470 mm)
J Dozer down	1 ft 8 in (510 mm)	1 ft 8 in (510 mm)
Bucket digging force (ISO)	14,163 lbf (63 kN)	
Arm digging force (ISO)	8,318 lbf (37 kN)	9,667 lbf (43 kN)
Bucket capacity	0.37 yd ³ (0.28 m ³)	
Bucket tip radius	3 ft 4 in (1,020 mm)	

SPECIFICATIONS



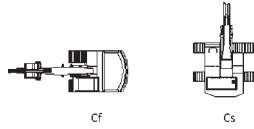
DIMENSIONS

	Standard Arm	Optional Arm
Boom		11 ft 1 in (3.37 m)
Arm options	6 ft 11 in (2.1 m)	5 ft 5 in (1.65 m)
A Shipping length		20 ft 4 in (6,200 mm)
B Shipping height top of boom		8 ft 11 in (2,710 mm)
C Track gauge		6 ft 5 in (1,950 mm)
D Undercarriage width		7 ft 10 in (2,400 mm)
E Length to center of rollers		7 ft 4 in (2,230mm)
F Track length		9 ft 4 in (2,845 mm)
G Overall width of upper structure		7 ft 3 in (2,200 mm)
H Tail swing radius		4 ft 8 in (1,410 mm)
I Counterweight ground clearance		2 ft 6 in (760 mm)
J Overall height of cab		9 ft 2 in (2,800 mm)
K Min. ground clearance		1 ft 2 in (360 mm)
L Track shoe width		18 in (450 mm)
M Dozer Blade - Max reach at ground level		6 ft 8 in (2,033 mm)
N Offset		8 in (200 mm)
O Max boom offset to the right		2 ft 11 in (886 mm)
P Max boom offset to the left		2 in (598 mm)
α Max boom swing angle to the right		55°
β Max boom swing angle to the left		65°

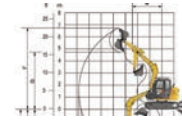
SPECIFICATIONS

OPTIONAL 909ECR WITH 18 IN (450MM) SHOES, 5 FT 5 IN (1.65 M) ARM

- A: Reach from swing center
- B: Bucket hook height
- C: Lifting capacity
- Cf: Rating over front
- Cs: Rating over side



Conditions:
 Boom length: 11 ft 1 in (3.37 m)
 Arm length: 5 ft 5 in (1.65 m)
 Counterweight: 3,086 lb (1,400 kg)
 Shoes: 18 in (450 mm)
 Bucket: SAE 0.37 yd³ (0.28 m³) 487 lb (221 kg)



1. *Indicates the load is limited by hydraulic capacity rather than the tipping capacity.
2. The below loads are in compliance with the ISO 10567 hydraulic rating standard. They do not exceed 87% of the hydraulic lifting capacity of 75% tipping load.
3. Rating at bucket lift hook.

Blade Up

A Reach: ft (m)

B: Height ft (m)		6 ft 7 in (2 m)		9 ft 10 in (3 m)		13 ft 1 in (4 m)		16 ft 5 in (5 m)		MAX REACH		Distance
		Cf	Cs	Cf	Cs	Cf	Cs	Cf	Cs	Cf	Cs	
13 ft 1 in 4 m	lb kg					*3,903 *1,770	*3,903 *1,770	2,911 1,320	3,330 1,510	2,822 1,280	3,241 1,470	16 ft 7 in 5.1 m
9 ft 10 in 3 m	lb kg			*5,887 *2,670	*5,887 *2,670	4,079 1,850	4,697 2,130	2,867 1,300	3,285 1,490	2,381 1,080	2,734 1,240	18 ft 3 in 5.6 m
6 ft 7 in 2 m	lb kg			5,909 2,680	6,946 3,150	3,859 1,750	4,454 2,020	2,756 1,250	3,175 1,440	2,183 990	2,513 1,140	19 ft 0 in 5.8 m
3 ft 3 in 1 m	lb kg			5,557 2,520	6,571 2,980	3,638 1,650	4,234 1,920	2,646 1,200	3,065 1,390	2,139 970	2,470 1,120	19 ft 0 in 5.8 m
0 ft 0 m	lb kg			5,490 2,490	6,505 2,950	3,550 1,610	4,145 1,880	2,602 1,180	3,021 1,370	2,227 1,010	2,580 1,170	18 ft 3 in 5.6 m
-3 ft 3 in -1 m	lb kg	12,326 5,590	15,325 6,950	5,513 2,500	6,549 2,970	3,528 1,600	4,123 1,870	2,602 1,180	3,021 1,370	2,514 1,140	2,911 1,320	16 ft 7 in 5.1 m
-6 ft 7 in -2 m	lb kg	12,546 5,690	15,237 6,910	5,645 2,560	6,681 3,030	3,616 1,640	4,212 1,910			3,263 1,480	3,793 1,720	14 ft 2 in 4.3 m

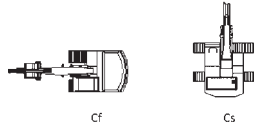
Blade Down

13 ft 1 in 4 m	lb kg					*3,903 *1,770	*3,903 *1,770	*4,079 *1,850	3,330 1,510	*4,123 *1,870	3,241 1,470	16 ft 7 in 5.1 m
9 ft 10 in 3 m	lb kg			*5,887 *2,670	*5,887 *2,670	*4,741 *2,150	4,697 2,130	*4,300 *1,950	3,285 1,490	*4,278 *1,940	2,734 1,240	18 ft 3 in 5.6 m
6 ft 7 in 2 m	lb kg			*9,371 *4,250	6,946 3,150	*5,998 *2,720	4,454 2,020	*4,851 *2,200	3,175 1,440	*4,476 *2,030	2,514 1,140	19 ft 0 in 5.8 m
3 ft 3 in 1 m	lb kg			*11,422 *5,180	6,571 2,980	*7,100 *3,220	4,234 1,920	*5,402 *2,450	3,065 1,390	*4,675 *2,120	2,470 1,120	19 ft 0 in 5.8 m
0 ft 0 m	lb kg			*11,598 *5,260	6,505 2,950	*7,651 *3,470	4,145 1,880	*5,711 *2,590	3,021 1,370	*4,983 *2,260	2,580 1,170	18 ft 3 in 5.6 m
-3 ft 3 in -1 m	lb kg		15,325 6,950	*10,981 *4,980	6,549 2,970	*7,541 *3,420	4,123 1,870	*5,535 *2,510	3,021 1,370	*5,314 *2,410	2,911 1,320	16 ft 7 in 5.1 m
-6 ft 7 in -2 m	lb kg		15,237 6,910	*9,393 *4,260	6,681 3,030	*6,483 *2,940	4,212 1,910			*5,689 *2,580	3,793 1,720	14 ft 2 in 4.3 m

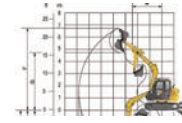
SPECIFICATIONS

STANDARD 909ECR WITH 18 IN (450MM) SHOES, 6 FT 11 IN (2.1 M) ARM

- A: Reach from swing center
- B: Bucket hook height
- C: Lifting capacity
- Cf: Rating over front
- Cs: Rating over side



Conditions:
 Boom length: 11 ft 1 in (3.37 m)
 Arm length: 6 ft 11 in (2.1 m)
 Counterweight: 3,637 LB (1,650 kg)
 Shoes: 18 in (450 mm)
 Bucket: SAE 0.37 yd³ (0.28 m³) 487 lb (221 kg)



1. *Indicates the load is limited by hydraulic capacity rather than the tipping capacity.
2. The below loads are in compliance with the ISO 10567 hydraulic rating standard. They do not exceed 87% of the hydraulic lifting capacity of 75% tipping load.
3. Rating at bucket lift hook.

Blade Up

A Reach: ft (m)

B: Height ft (m)		6 ft 7 in (2 m)		9 ft 10 in (3 m)		13 ft 1 in (4 m)		16 ft 5 in (5 m)		19 ft 8 in (6 m)		MAX REACH		Distance
		Cf	Cs	Cf	Cs	Cf	Cs	Cf	Cs	Cf	Cs	Cf	Cs	
13 ft 1 in 4 m	lb kg					*3,109 *1,410	*3,109 *1,410	2,426 1,100	2,778 1,260			1,962 890	2,271 1,030	18 ft 4 in 5.6 m
9 ft 10 in 3 m	lb kg					3,440 1,560	3,969 1,800	2,359 1,070	2,712 1,230	1,698 770	1,985 900	1,698 770	1,962 890	19 ft 8 in 6 m
6 ft 7 in 2 m	lb kg			5,094 2,310	5,976 2,710	3,219 1,460	3,726 1,690	2,249 1,020	2,602 1,180	1,808 820	1,940 880	1,566 710	1,830 830	20 ft 4 in 6.2 m
3 ft 3 in 1 m	lb kg			4,608 2,090	5,468 2,480	2,999 1,360	3,506 1,590	2,448 1,110	2,492 1,130	1,610 730	1,874 850	1,521 690	1,786 810	20 ft 4 in 6.2 m
0 ft 0 m	lb kg		12,238 5,550	4,432 2,010	5,292 2,400	2,844 1,290	3,352 1,520	2,051 930	2,403 1,090	1,566 710	1,852 840	1,566 710	1,830 830	19 ft 8 in 6 m
-3 ft 3 in -1 m	lb kg		12,326 5,590	4,410 2,000	5,270 2,390	2,800 1,270	3,308 1,500	2,029 920	2,381 1,080			1,742 790	2,029 920	18 ft 4 in 5.6 m
-6 ft 7 in -2 m	lb kg		12,546 5,690	4,476 2,030	5,336 2,420	2,822 1,280	3,330 1,510					2,117 960	2,492 1,130	16 ft 1 in 4.9 m
-9 ft 10 in -3 m	lb kg		12,965 5,880	4,675 2,120	5,535 2,510							3,396 1,540	3,947 1,790	12 ft 0 in 3.7 m

Blade Down

13 ft 1 in 4 m	lb kg					*3,109 *1,410	*3,109 *1,410	*3,440 *1,560	2,778 1,260			*3,682 *1,670	2,271 1,030	18 ft 4 in 5.6 m
9 ft 10 in 3 m	lb kg					*3,991 *1,810	3,969 1,800	*3,815 *1,730	2,712 1,230	*3,815 *1,730	1,985 900	*3,815 *1,730	1,962 890	19 ft 8 in 6 m
6 ft 7 in 2 m	lb kg			*7,784 *3,530	5,976 2,710	*5,336 *2,420	3,726 1,690	*4,432 *2,010	2,602 1,180	*3,771 *1,710	1,940 880	*4,013 *1,820	1,830 830	20 ft 4 in 6.2 m
3 ft 3 in 1 m	lb kg			*10,650 *4,830	5,468 2,480	*6,659 *3,020	3,506 1,590	*4,608 *2,090	2,492 1,130	*4,344 *1,970	1,874 850	*4,234 *1,920	1,786 810	20 ft 4 in 6.2 m
0 ft 0 m	lb kg		12,238 5,550	*11,664 *5,290	5,292 2,400	*7,012 *3,180	3,352 1,520	*5,579 *2,530	2,403 1,090	*4,454 *2,020	1,852 840	*4,498 *2,040	1,830 830	19 ft 8 in 6 m
-3 ft 3 in -1 m	lb kg		12,326 5,590	*11,510 *5,220	5,270 2,390	*7,695 *3,490	3,308 1,500	*5,689 *2,580	2,381 1,080			*4,829 *2,190	2,029 920	18 ft 4 in 5.6 m
-6 ft 7 in -2 m	lb kg		12,546 5,690	*10,430 *4,730	5,336 2,420	*7,144 *3,240	3,330 1,510					*5,226 *2,370	2,492 1,130	16 ft 1 in 4.9 m
-9 ft 10 in -3 m	lb kg		12,965 5,880	*7,762 *3,520	5,535 2,510							*5,755 *2,610	3,947 1,790	12 ft 0 in 3.7 m

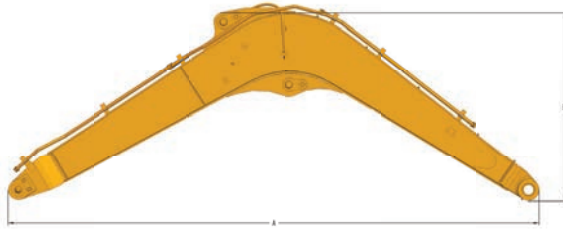
SPECIFICATIONS

MACHINE WEIGHTS AND GROUND PRESSURE

Operating weight includes boom 11 ft 1 in (3.37 m), arm 6 ft 11 in (2.1 m), bucket 0.37 yd³ (0.28 m³) counterweight 3,637 lb (1,650 kg) full fuel tank, and operator. Bucket weight 487 lb (221 kg).

Shoe Width	Operating Weight	Ground Pressure	Overall Width
18 in (450 mm)	19,180 lb (8,700 kg)	5.7 psi (39.2 kPa)	7 ft 3 in (2,200 mm)

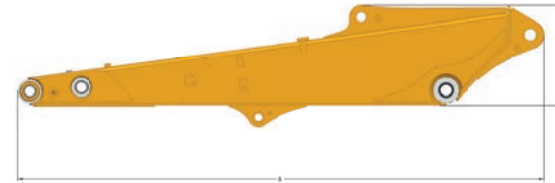
BOOM DIMENSIONS



Description	Standard
Boom	11 ft 1 in (3.37 m)
Length	11 ft 6 in (3,510 mm)
Height	4 ft 1 in (1,236 mm)
Width	1 ft 5 in (424 mm)
Weight	959 lb (435 kg)

Includes cylinder, piping and pin, excludes boom cylinder pin

ARM DIMENSIONS



Description	Short	Standard
Arm	5 ft 5 in (1.65 m)	6 ft 1 in (2.1 m)
Length	7 ft 3 in (2,205 mm)	8 ft 9 in (2,660 mm)
Height	1 ft 8 in (510 mm)	1 ft 8 in (510 mm)
Width	10 in (254 mm)	9 in (220 mm)
Weight	364 lb (165 kg)	463 lb (210 kg)

Includes cylinder, piping and pin, excludes boom cylinder pin

BUCKET SELECTION GUIDE

Bucket Type	Capacity	Cutting Width	Weight	Teeth Pcs	11 ft 1 in Boom	
					6 ft 11 in Arm	5 ft 5 in Arm
General Purpose	0.37 yd ³ (0.28 m ³)	2 ft 6 in (762 mm)	487 lb (221 kg)	4	A	B

EQUIPMENT

STANDARD

Engine

Yanmar 4TNV98C certified to stringent US EPA Tier 4 Final

In-line 4 cylinders, 4 stroke, water-cooled, natural aspiration, common rail, EGR, DPF

2-stage air filter

Pre-filter with water separator

Engine oil filter

Auto-idle speed control

Radiator, oil cooler

Engine overheat prevention system

Hydraulic System

Main pump: one variable displacement piston pump

Load sensing hydraulic pump

Cylinders: boom, arm, bucket, swing cylinder, dozer

Swing motor with automatic parking brake

Boom and arm regeneration circuits

Pilot control shut-off lever

High flow 2-way auxiliary proportional control

Low flow 2-way auxiliary proportional control

Two electrical proportional joysticks

Control pattern-change valve SAE-BHL

Hydraulic thumb proportional control

Hydraulic pipe system for quick coupler high pressure

Auxiliary case drain line to hydraulic tank

Hydraulic oil pre-heat

Hydraulic attachments rotation lines with variable flow

Hose burst safety valves, prevention of boom or arm supply dropped when the lines split.

Quick coupler liners with alarm (low and high pressure)

Single auxiliary pipe for oil returning

Dozer float function

Guards

Cover plate under travel frame

Cover plate travel motors

Work Equipment

6 ft 11 in (2.1 m) arm

11 ft 1 in (3.37 m) boom

0.37 yd³ (0.28 m³) pin-on bucket

STANDARD

Operator Station

Pressurized and sealed cab

2-speed wiper with intermittent interval

Removable lower window

Auto A/C heater and defroster

Air suspension seat

AM/FM Bluetooth radio

Glass-breaking hammer

12V outlet

Right side sliding window

Cup holder

Floor mat

Fire extinguisher

All locks universal key

ROPS (ISO12117-2) Rollover Protective System

3-working mode selection system: Power, Economy, Lift

Rotating beacon

Travel alarm

Sky light roof top

Undercarriage

Steel tracks with 18 in rubber street pads

Rollers, bottom - 6 each side, top - 1 each side

Towing eye on base frame

Track gauge 6 ft 5 in (1,950 mm)

2-way dozer blade with float

Electrical

Alternator - 12 V, 55A

One battery - 12 V

Working lights, 2 cab mounted, 1 boom mounted LED

Starting motor - 12 V, 4hp

Rotating beacon

Rearview camera

Instrumentation

7 in color LCD

Warning indicators engine oil pressure, engine coolant, battery, hydraulic oil temperature, engine intake filter

Engine water temperature gauge

Fuel level indicator

Hydraulic temperature indicator

Travel speed setting

STANDARD

Instrumentation (Continued)

Service hour meter

Other Standard Equipment

3,086 lb (1,400 kg) counterweight

Maintenance parts package

OPTIONAL

Operator Station

Falling-Object Protective Structures (FOPS) - front and top

Safety net for front window

3 in flexible seat belt

8 mm belly guard

Electrical

Halogen working lights on cab, 4 front, 2 rear

Right hand view camera

Cold weather start

Upper Structure

8 mm thickness platform bottom plate

Undercarriage

Triple grouser track shoes 18 in (450 mm)

Triple grouser steel track 24 in (600 mm)

Work Tools

20 in bucket with 3 teeth

26 in bucket with 4 teeth

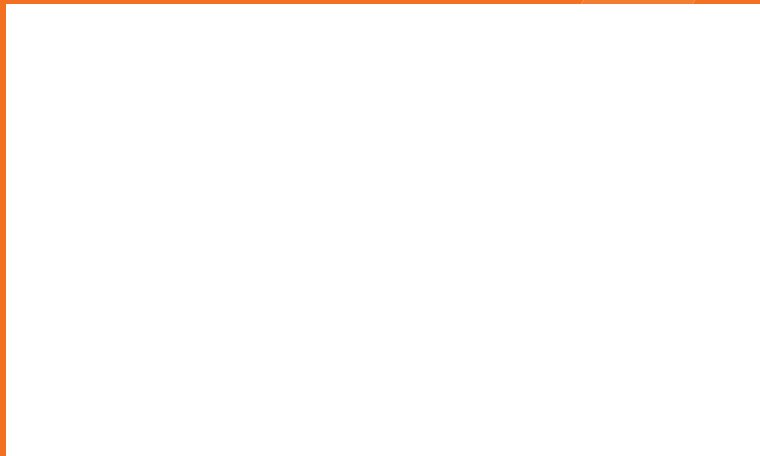
30 in bucket with 4 teeth

48 in ditch cleaning bucket

Hydraulic quick coupler with pipping

Digging Equipment

5 ft 5 in (1.65 m) arm



LGNA-PB-909ECR-20200908-ENG-US

The LiuGong series of logos herein, including but not limited to word marks, device marks, letter of alphabet marks and combination marks, as the registered trademarks of Guangxi LiuGong Group Co., Ltd. are used by Guangxi LiuGong Machinery Co., Ltd. with legal permission, and shall not be used without permission. Specifications and designs are subject to change without notice. Illustrations and pictures may include optional equipment and may not include all standard equipment. Equipment and options vary by regional availability.



LiuGong Construction Machinery N.A., LLC.

22220 Merchants Way - Suite 100

Katy, TX 77449

USA

T: 281-579-8882

F: 281-579-8388

www.liugongna.com

