

915Fcr

EXCAVATOR

ENGINE	OPERATING WEIGHT	GROSS POWER	BUCKET CAPACITY	MAX. DIGGING DEPTH
Cummins F3.8	34,400 lb (15,600 kg)	122 hp (90 kW)	0.72 yd ³ (0.55 m ³)	19 ft 6 in (5,940 mm)



SPECIFICATIONS

ENGINE

High-pressure common rail, electronically controlled direct injection fuel system with 3 power modes, auto-idle and auto-shutdown features.

Emissions rating	EPA Tier 4 Final/EU Stage V
Make	Cummins
Model	F3.8
Aspiration	Variable-Geometry Turbocharged (VGT)
Charged air cooling	Aftercooler
Cooling fan drive	Mechanical, Direct
Displacement	231.9 in ³ (3.8 L)
Gross power	122 hp (90 kW) @ 2,200 rpm
Net power	115 (84.5 kW) @ 2,200 rpm
Peak torque	369 lbf-ft (500 N-m) @ 1,500 rpm
Cylinders	4-cylinder, in-line, water-cooled
Bore x Stroke	4 in x 4.5 in (102 mm x 115 mm)

HYDRAULIC SYSTEM

Main pump, type	Two variable-displacement piston pumps
Main pump, maximum flow	2 x 31 gpm (2 x 117 L/min)
Implement pressure	Normal: 4,975 psi (34.3 MPa) Power boost: 5,366 psi (37 MPa)
Auxiliary 1, one-way pressure	4,350 psi (30 MPa)
Auxiliary 1, two-way pressure	4,350 psi (30 MPa)
Auxiliary 1, maximum flow	31 gpm (117 L/min)
Auxiliary 2, two-way pressure	3,625 psi (25 MPa)
Auxiliary 2, maximum flow	12 gpm (45 L/min)
Slew circuit pressure	3,843 psi (26.5 MPa)
Travel circuit pressure	4,975 psi (34.3 MPa)
Pilot pump, type	Gear pump
Pilot circuit pressure	508-566 psi (3.5-3.9 MPa)
Pilot pump, maximum flow	4.8 gpm (18 L/min)

OPERATING WEIGHT

Operating weight, typical	33,951 lb (15,400 kg)
Operating weight, maximum	37,919 lb (17,200 kg)

SERVICE CAPACITIES

Fuel tank	52.8 gal (200 L)
Engine oil	3.2 gal (12 L)
Final drive, each	0.7 gal (2.5 L)
Swing drive	0.8 gal (3 L)
Cooling system	5.3 gal (20 L)
Hydraulic reservoir	26.5 gal (100 L)
Hydraulic system total	42.3 gal (160 L)
DEF tank	6.6 gal (25 L)

UNDERCARRIAGE

Track shoes, each side	45
Link pitch	6.9 in metal (175 mm)
Shoe width, typical	24 in (600 mm)
Bottom rollers, each side	7
Top rollers, each side	2

SWING SYSTEM

Planetary gear reduction driven by high torque axial piston motor, with oil disk brake. Swing parking brake resets within five seconds after swing controls return to neutral.

Swing speed	11.3 rpm
Swing torque	27,134 lbf-ft (36,790 N-m)

DRIVE & BRAKES

2-speed axial piston motors with oil disk brakes. Steering controlled by two detachable hand levers with pedals.

Max. travel speed	High: 3.1 mph (4.9 km/h) Low: 1.8 mph (2.9 km/h)
Gradeability	35°/70%
Max. drawbar pull	27,426 lbf (122 kN)

ELECTRIC SYSTEM

System voltage	24 V
Battery	2 x 12 V, in series
Alternator	24 V-70 A
Starter motor	24 V-6.5 hp (24 V-4.8 kW)

SOUND PERFORMANCE

Interior sound level (ISO 6396)	72 dB(A)
Exterior sound level (ISO 6395)	99 dB(A)

SPECIFICATIONS

- A: Load radius
- B: Load point height
- C: Lifting capacity
- Cf: Rating over front
- Cs: Rating over side

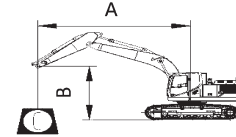


Cf



Cs

Conditions:
 Boom length: 15 ft 1 in (4,600 mm)
 Arm length: As specified
 Counterweight: 7,715 lb (3,500 kg)
 Shoes: 24 in (600 mm), triple grouser
 Bucket: None



1. *Indicates the load is limited by hydraulic capacity rather than the tipping capacity.
2. The below loads are in compliance with the ISO 10567 lift capacity rating standard and do not exceed 87% of the hydraulic lifting capacity or 75% of the tipping load.
3. Rating at bucket lift point.

915FCR WITH BLADE , 8 FT 2 IN (2,500 MM) ARM

Blade down

A Reach: ft (m)

B: Height ft (m)	Weight lb kg	5 ft (1.5 m)		10 ft (3 m)		15 ft (4.5 m)		20 ft (6 m)		MAX REACH		Distance
		Cf	Cs	Cf	Cs	Cf	Cs	Cf	Cs	Cf	Cs	
20 ft 6 m	lb kg					*8,000 *3,600	*8,000 *3,600			*4,600 *2,050	*4,600 *2,050	17 ft 9 in 5.4 m
15 ft 4.5 m	lb kg					*8,400 *3,800	*8,400 *3,800	*7,400 *3,350	5,450 2,450	*5,250 *2,350	5,050 2,250	20 ft 8 in 6.3 m
10 ft 3 m	lb kg			*13,550 *6,150	*13,550 *6,150	*9,950 *4,500	8,100 3,650	*8,450 *3,800	5,300 2,400	*4,400 *2,000	4,250 1,900	22 ft 8 in 6.9 m
5 ft 1.5 m	lb kg			*18,650 *8,450	13,200 6,000	*11,800 *5,350	7,550 3,400	*9,200 *4,150	5,100 2,300	*5,700 *2,550	4,100 1,850	23 ft 0 in 7.0 m
Ground Level	lb kg			*15,950 *7,200	12,450 5,650	*13,000 *5,850	7,150 3,200	*9,650 *4,350	4,900 2,200	*5,350 *2,400	4,050 1,850	22 ft 8 in 6.9 m
-5 ft -1.5 m	lb kg	*11,350 *5,150	*11,350 *5,150	*18,950 *8,600	12,350 5,600	*12,800 *5,800	6,950 3,150	*9,250 *4,200	4,800 2,150	*6,200 *2,800	4,450 2,000	20 ft 8 in 6.3 m
-10 ft -3 m	lb kg	*20,150 *9,150	*20,150 *9,150	*15,750 *7,150	12,550 5,700	*10,850 *4,900	7,050 3,200			*8,300 *3,750	5,600 2,550	17 ft 9 in 5.4 m

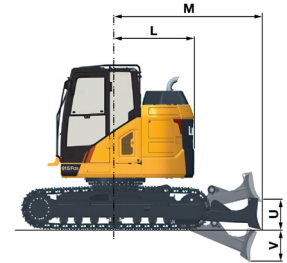
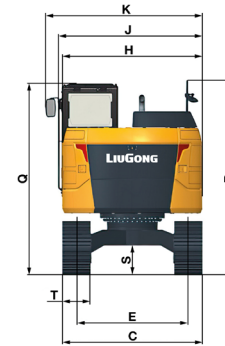
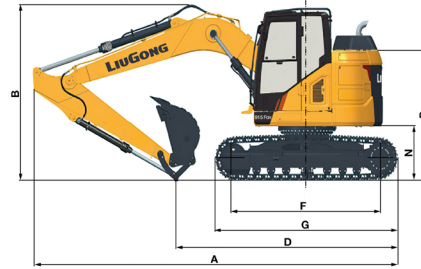
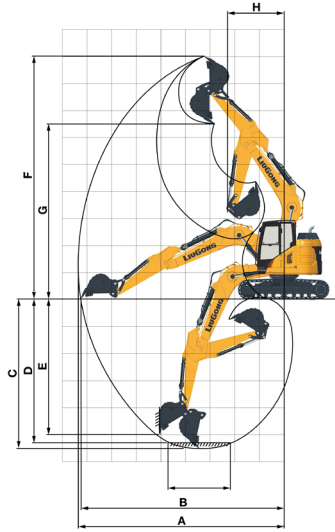
915FCR WITH BLADE , 9 FT 6 IN (2,900 MM) ARM

Blade down

20 ft 6 m	lb kg					*7,100 *3,200	*7,100 *3,200			*3,800 *1,700	*3,800 *1,700	19 ft 4 in 5.9 m
15 ft 4.5 m	lb kg					*7,600 *3,450	*7,600 *3,450	*7,400 *3,350	5,650 2,550	*3,650 *1,650	*3,650 *1,650	22 ft 4 in 6.8 m
10 ft 3 m	lb kg			*11,950 *5,400	*11,990 *5,400	*9,200 *4,150	8,400 3,800	*8,000 *3,600	5,450 2,450	*3,600 *1,600	*3,600 *1,600	23 ft 11 in 7.3 m
5 ft 1.5 m	lb kg			*17,400 *7,900	13,800 6,250	*11,250 *5,100	7,750 3,500	*8,850 *4,000	5,200 2,350	*4,500 *2,000	3,850 1,750	24 ft 1 in 7.3 m
Ground Level	lb kg			*17,300 *7,800	12,750 5,750	*12,700 *5,750	7,300 3,300	*9,500 *4,300	5,000 2,250	*4,300 *1,950	3,800 1,700	23 ft 11 in 7.3 m
-5 ft -1.5 m	lb kg	*10,400 *4,700	*10,400 *4,700	*19,500 *8,850	12,500 5,650	*12,950 *5,850	7,050 3,200	*9,450 *4,250	4,850 2,200	*5,350 *2,400	4,150 1,850	22 ft 0 in 6.8 m
-10 ft -3 m	lb kg	*17,450 *7,900	*17,450 *7,900	*16,900 *7,650	12,600 5,700	*11,550 *5,250	7,050 3,200			*7,200 *3,250	5,050 2,250	19 ft 4 in 5.9 m
-15 ft -4.5 m	lb kg			*11,200 *5,050	*11,200 *5,050					*6,850 *3,100	*6,850 *3,100	14 ft 5 in 4.4 m

SPECIFICATIONS

DEALER INFORMATION HERE



WORKING RANGES

Description		Short Arm	Long Arm
Boom		15 ft 1 in (4,600 mm)	
Arm options		8 ft 2 in (2,500 mm)	9 ft 6 in (2,900 mm)
A	Max. digging reach	27 ft 4 in (8,365 mm)	28 ft 8 in (8,750 mm)
B	Max. digging reach at ground level	27 ft 0 in (8,240 mm)	28 ft 4 in (8,630 mm)
C	Max. digging depth	18 ft 2 in (5,540 mm)	19 ft 6 in (5,940 mm)
D	Max. digging depth 8 ft (2.4m) level	17 ft 6 in (5,325 mm)	18 ft 10 in (5,745 mm)
E	Max. vertical wall digging depth	16 ft 7 in (5,055 mm)	17 ft 10 in (5,445 mm)
F	Max. digging height	29 ft 7 in (9,015 mm)	30 ft 7 in (9,315 mm)
G	Max. dumping height	21 ft 3 in (6,485 mm)	22 ft 3 in (6,785 mm)
H	Min. swing radius	7 ft 8 in (2,325 mm)	8 ft 0 in (2,430 mm)
Arm digging force (ISO)	Normal	14,590 lbf (65 kN)	13,039 lbf (58 kN)
	Power Boost	15,737 lbf (70 kN)	14,275 lbf (64 kN)
Bucket digging force (ISO)	Normal	20,188 lbf (90 kN)	
	Power Boost	21,784 lbf (97 kN)	
Bucket capacity*		0.72 yd ³ (0.55 m ³)	
Bucket tip radius*		43 in (1,085 mm)	
Bucket width*		38 in (965 mm)	

* Factory standard

DIMENSIONS

Description	Short Arm	Long Arm
Boom	15 ft 1 in (4,600 mm)	
Arm options	8 ft 2 in (2,500 mm)	9 ft 6 in (2,900 mm)
A	Shipping length	23 ft 11 in (7,280 mm)
B	Shipping height top of boom	10 ft 8 in (3,255 mm)
C	Undercarriage width, with 20 in (500 mm) shoes	8 ft 2 in (2,490 mm)
D	Shipping length on ground	14 ft 8 in (4,470 mm)
E	Track gauge	6 ft 6 in (1,990 mm)
F	Length to center of rollers	9 ft 11 in (3,010 mm)
G	Track length	12 ft 3 in (3,745 mm)
H	Overall width of upper structure	8 ft 2 in (2,490 mm)
J	Overall width including handrail	8 ft 5 in (2,570 mm)
K	Overall width including cab rearview mirror	9 ft 2 in (2,790 mm)
L	Tail swing radius	5 ft 0 in (1,525 mm)
M	Distance of swing center to blade	9 ft 2 in (2,800 mm)
N	Counterweight ground clearance	3 ft 1 in (935 mm)
P	Overall height of counterweight	7 ft 3 in (2,215 mm)
Q	Overall height of cab	9 ft 11 in (3,020 mm)
R	Overall height of platform handrail	9 ft 8 in (2,935 mm)
S	Minimum ground clearance	18 in (450 mm)
T	Track shoe width	20 in (500 mm)
		24 in (600 mm)
		28 in (700 mm)
		32 in (800 mm)
U	Blade, maximum height	1 ft 9 in (540 mm)
V	Blade, maximum depth	Blade width with 20 in (500mm) shoes
		8 ft 2 in (2,490 mm)
		Blade width with 24 in (600mm) shoes
8 ft 6 in (2,590 mm)		

LGNA-SS-915FCR-202211-ENG-US

Specifications and designs are subject to change without notice. Machines shown may include optional equipment.

LiuGong Construction Machinery N.A., LLC.
22220 Merchants Way - Suite 100
Katy, TX 77449
USA

T: 281-579-8882
www.liugongna.com

F: 281-579-8388